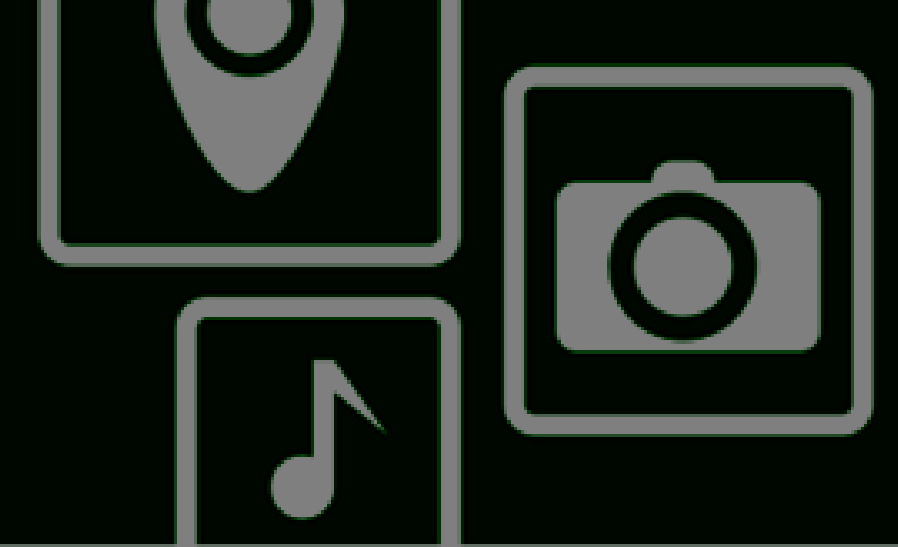




DEVELOPER
DAYS **2014**
EUROPE

Developing great location-based
apps with QML!

Jen Trieu
Esri, Inc



Agenda

- Location in your apps.
- Determine your app/map pattern
- Location and Mapping SDK for QML developers
- Examples
- QA



Why is location important?



Location-aware apps

Why is it important?

- Answers the question: Where and Why?
- Improve communication
- Better decision making
- Cost savings from greater efficiency



Determine your app/map pattern



Understand your end user

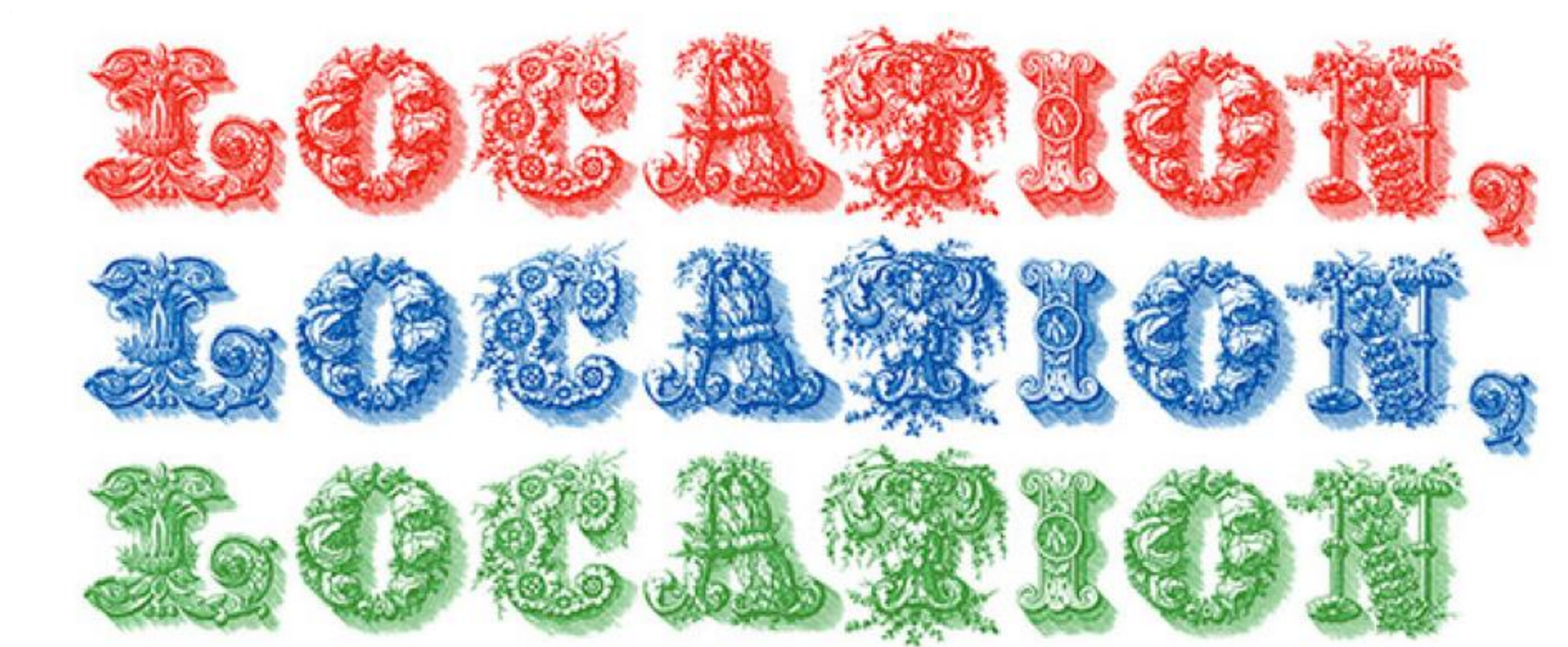


What part does location play in your app?

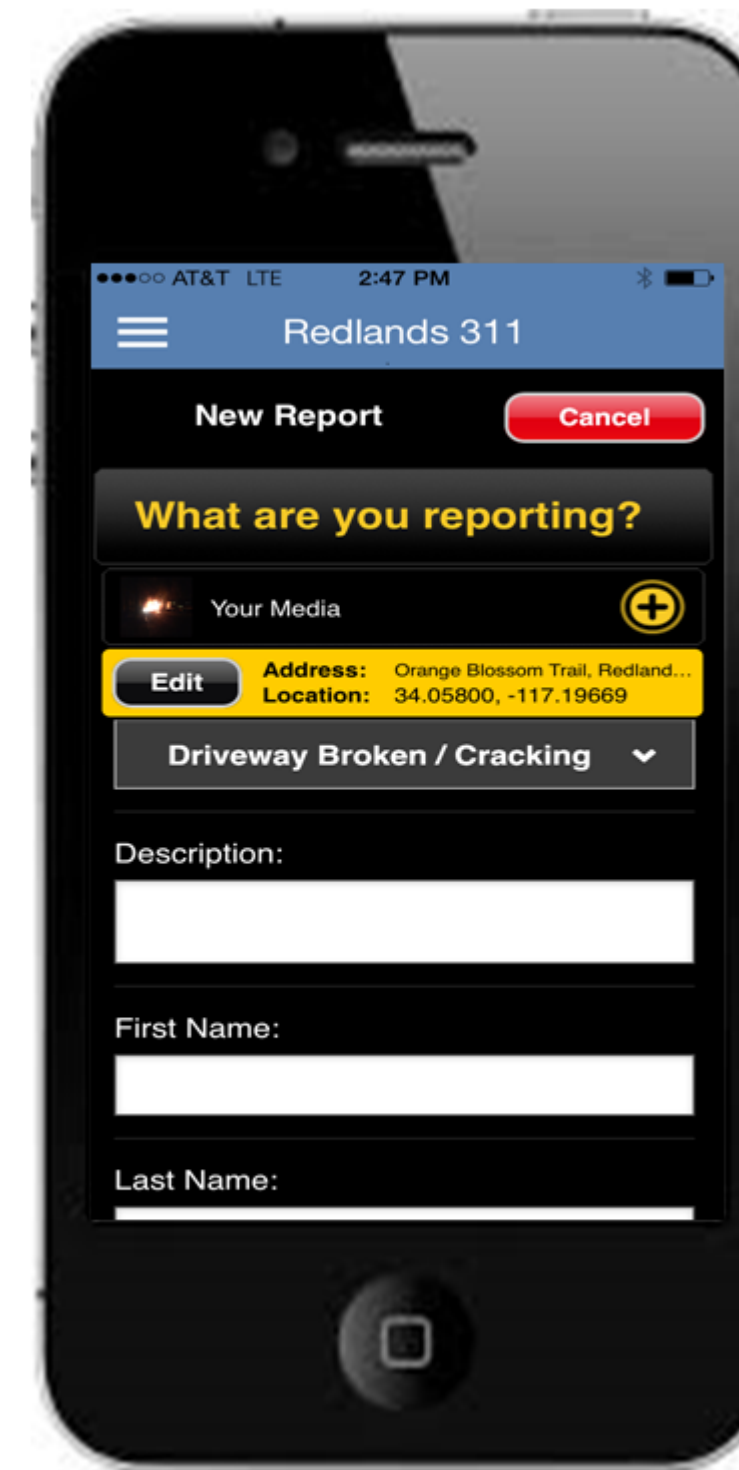
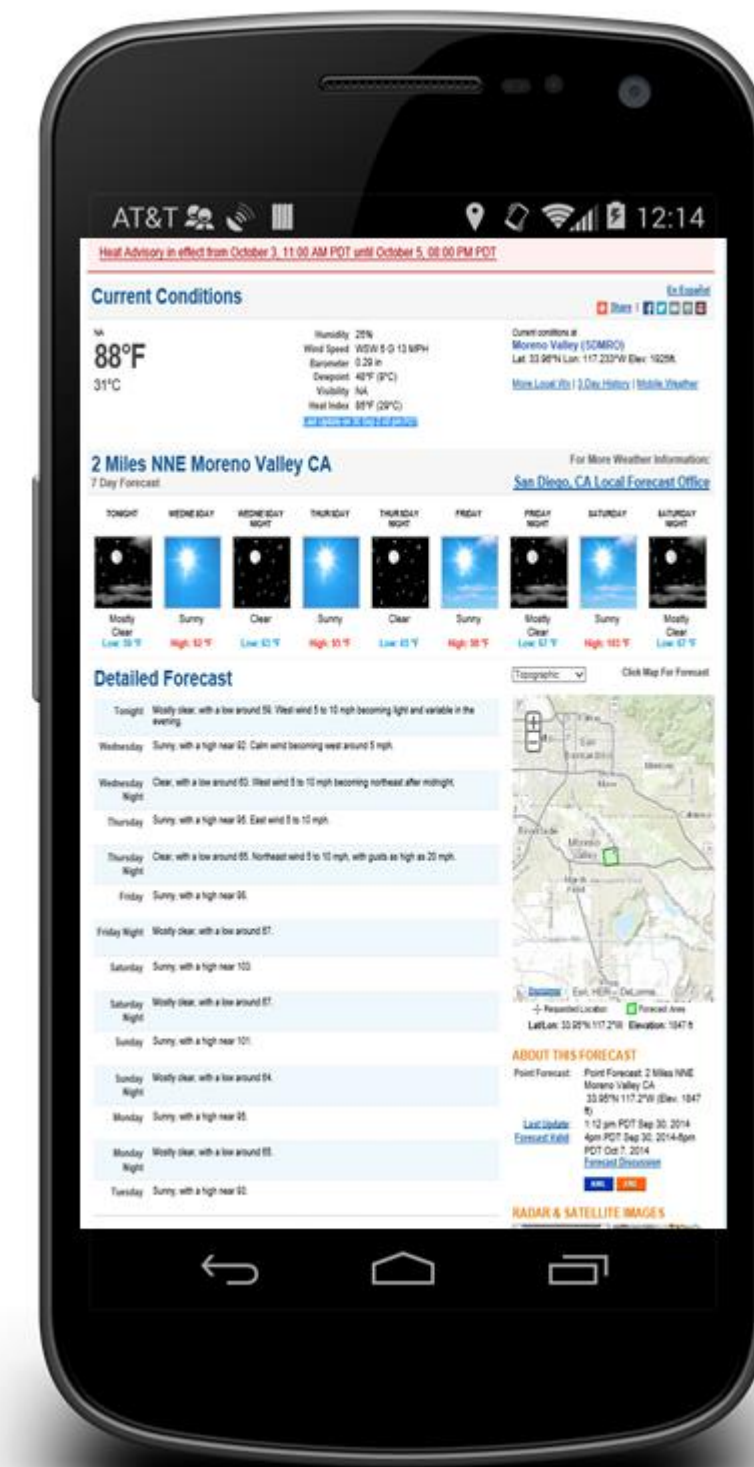
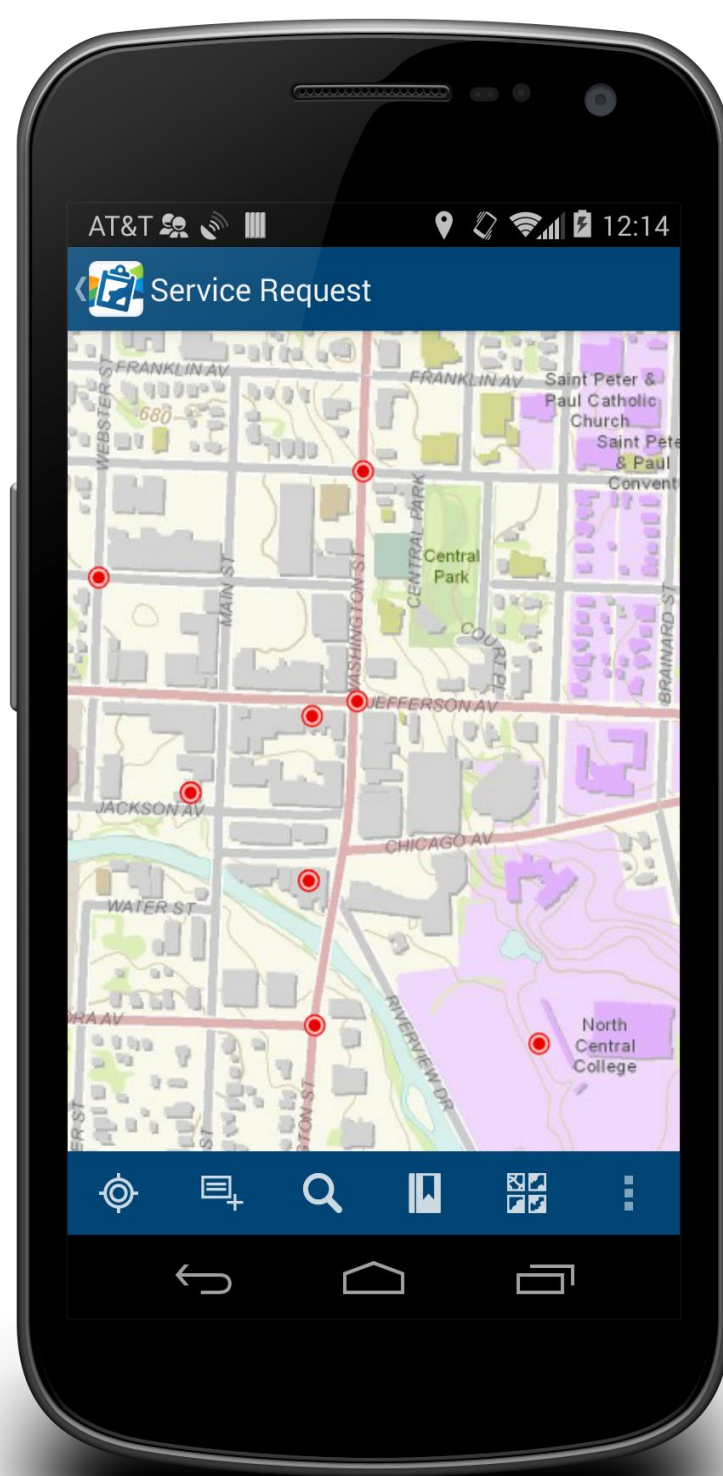




Location Based Experience:



Maps vs Map-less



LBX Patterns

<http://developers.arcgis.com/android/guide/determine-your-app-map-pattern.htm>



It's all about the map

Get to that map
quickly

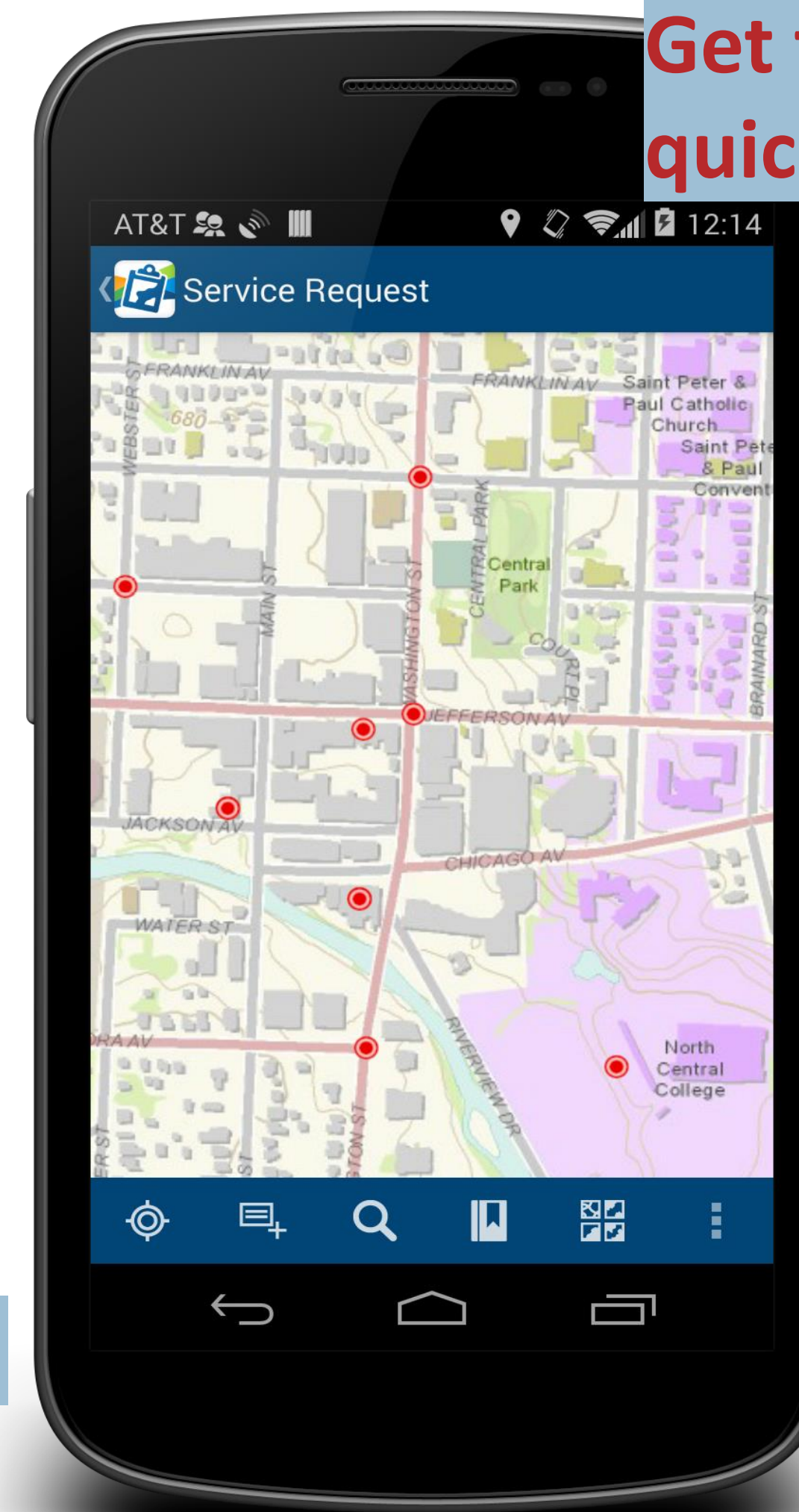
Maximize map-estate

Map centric apps

Tools?

Cartography

<http://www.esri.com/software/arcgis/arcgisonline/apps/collector>

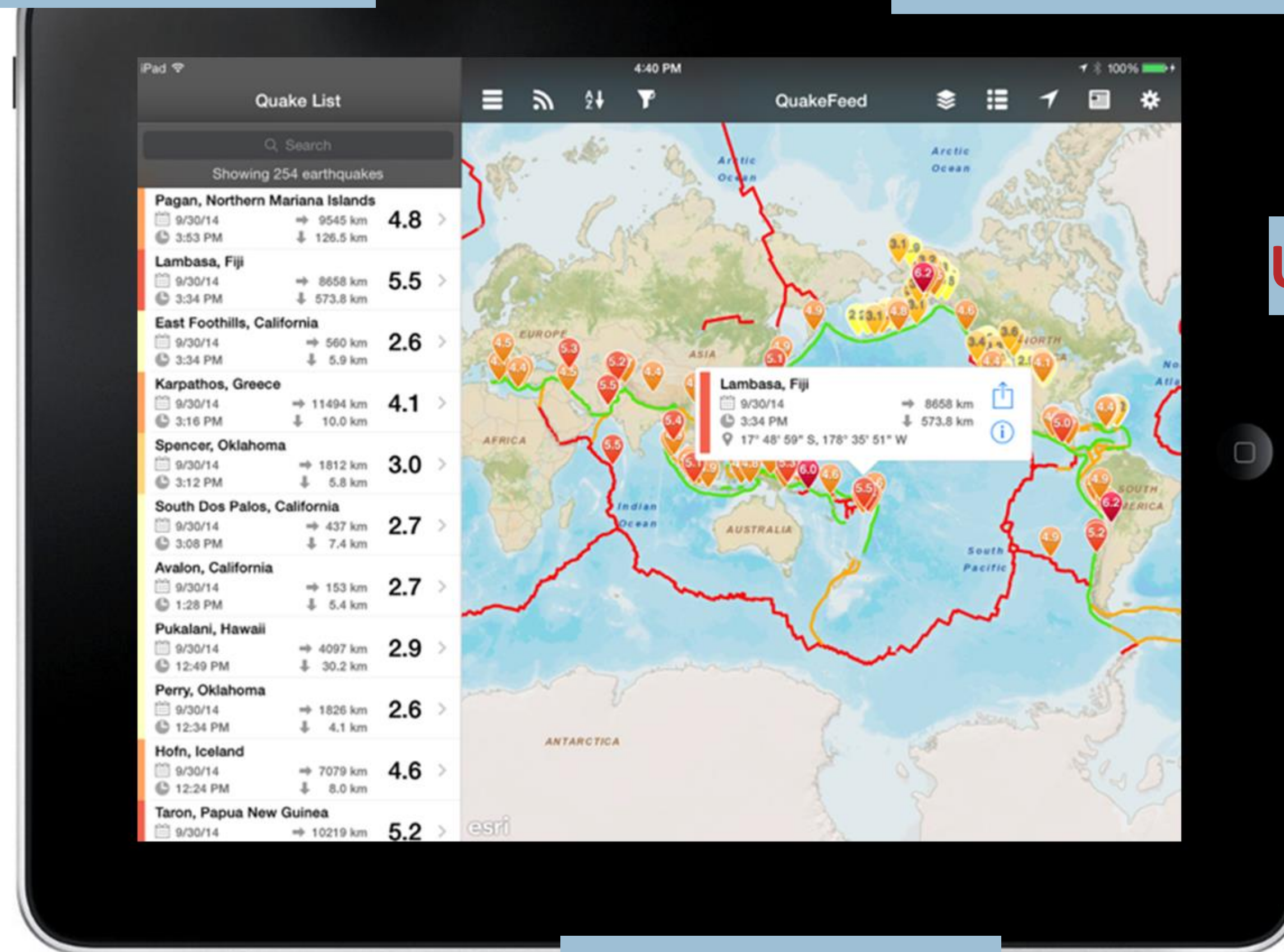


The map is a navigation tool

Part of apps screen flow

Focused tool set

Maps as a Navigation Tool



Use pop-ups?

Simple carto

<http://quakefeed.net/>

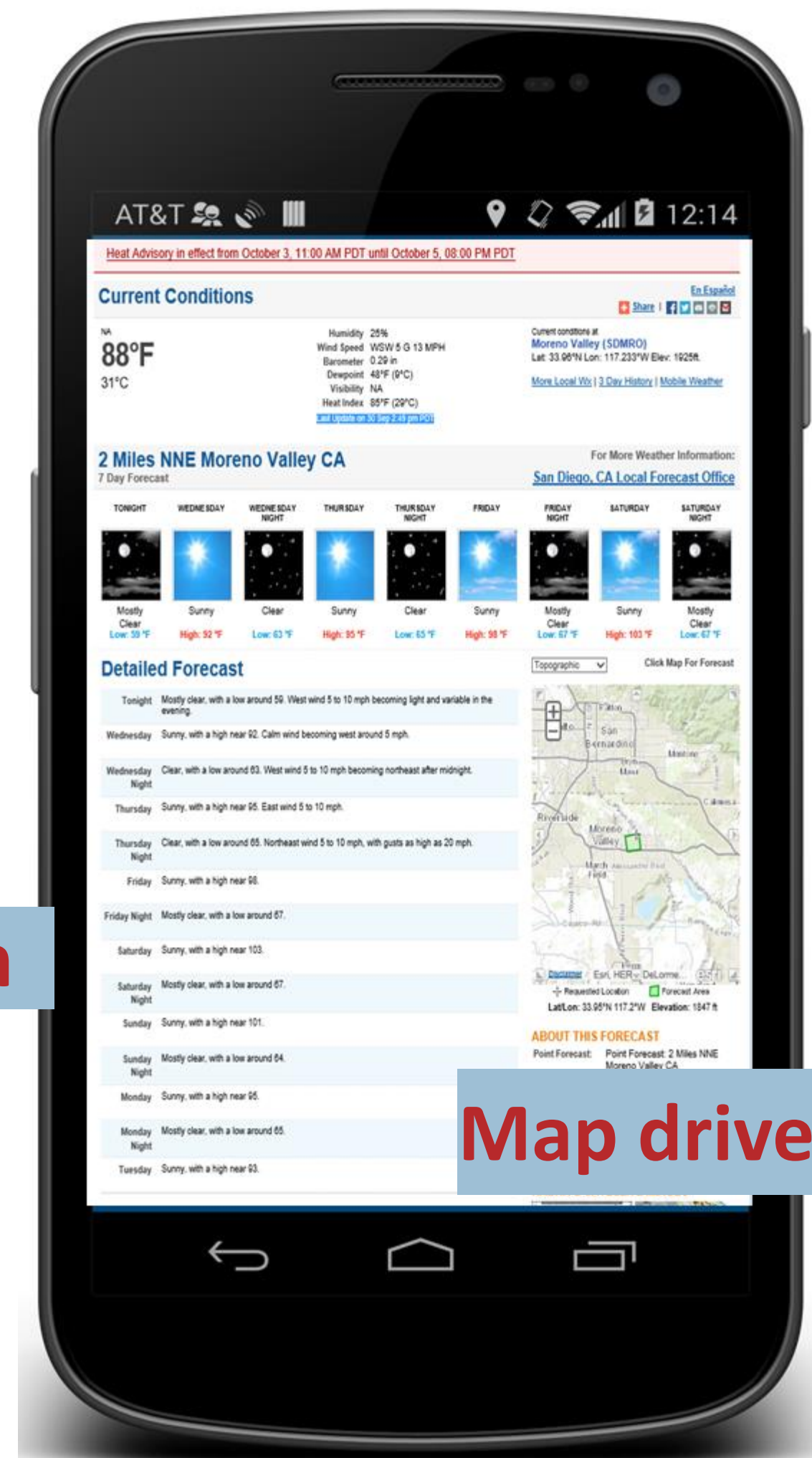


Maps as context

Embedded in other information

Map driven by other content

<http://www.noaa.gov/>

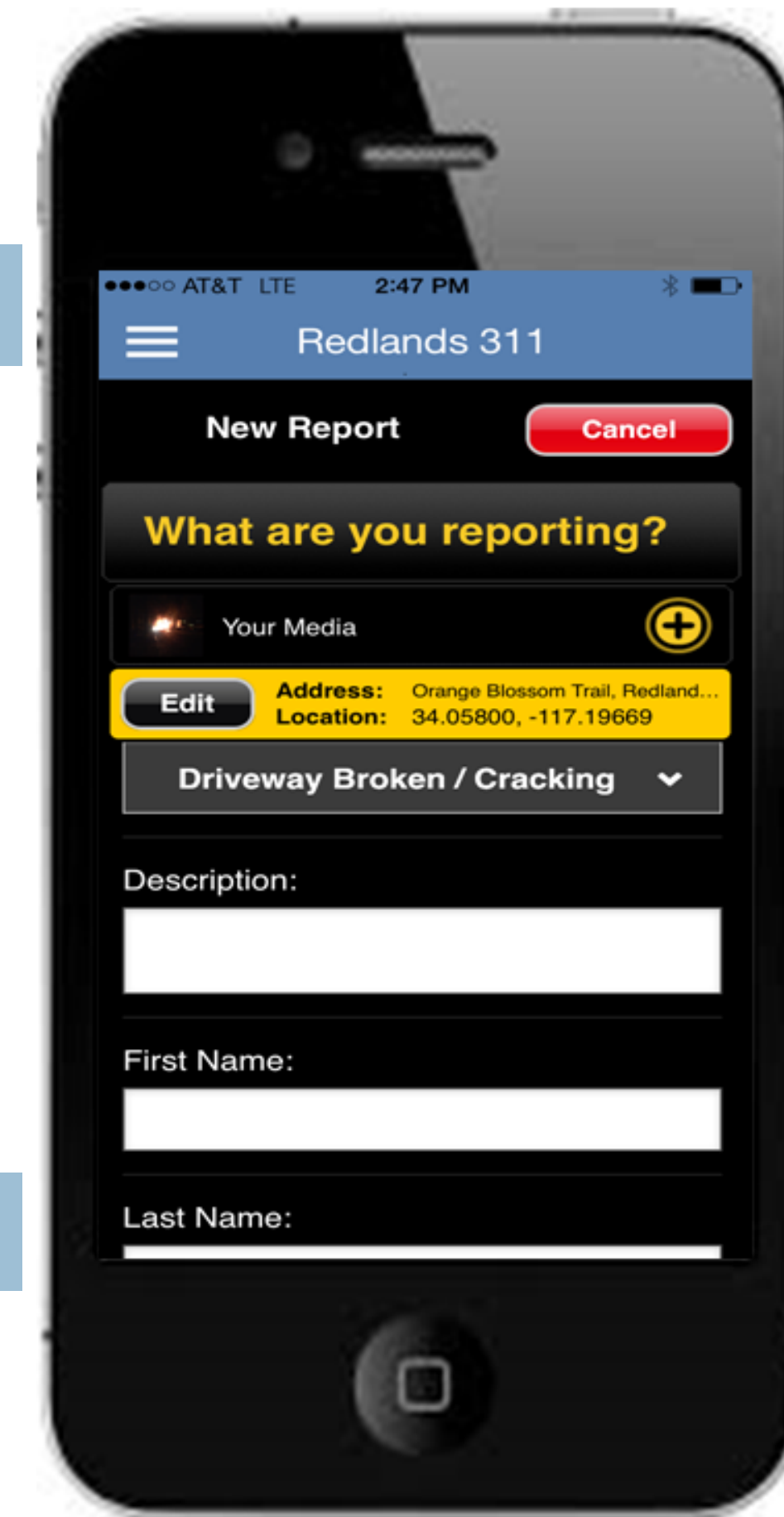


You don't need a map to add location info

Map-less apps (eh?)

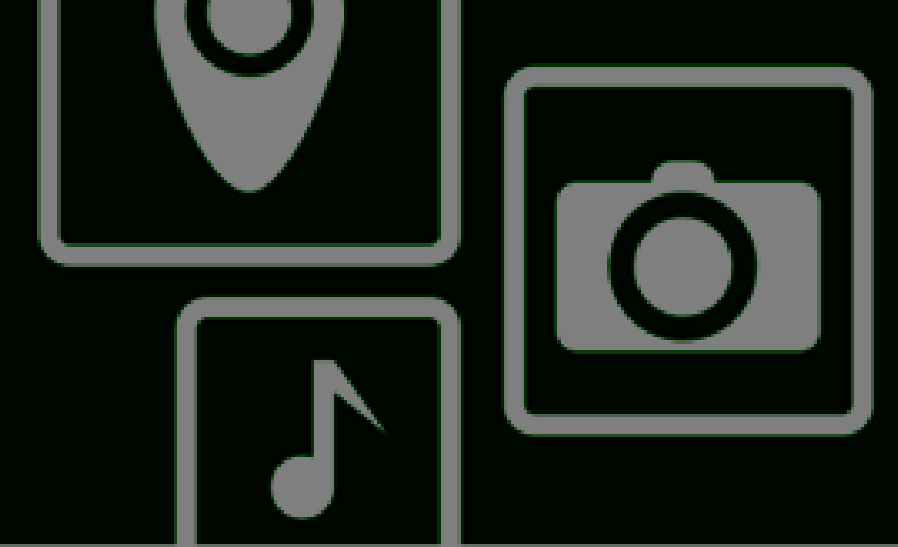
They don't need to know

Adds spatial intelligence



<http://www.cityofredlands.org/311>

More than dots on a map...



SDK that allows you to build spatial capabilities into your Qt apps natively.

Provides C++/QML APIs that allow your apps perform...

- Mapping and data visualization
- Analysis tasks
- Data editing and data management in the Cloud
- Finding addresses
- Getting directions
- Online or offline (connected or disconnected)





Demonstration

ArcGIS Runtime SDK for Qt

<http://developers.arcgis.com/en>





Device Platforms



PHONE



TABLET



LAPTOP



DESKTOP



EMBEDDED

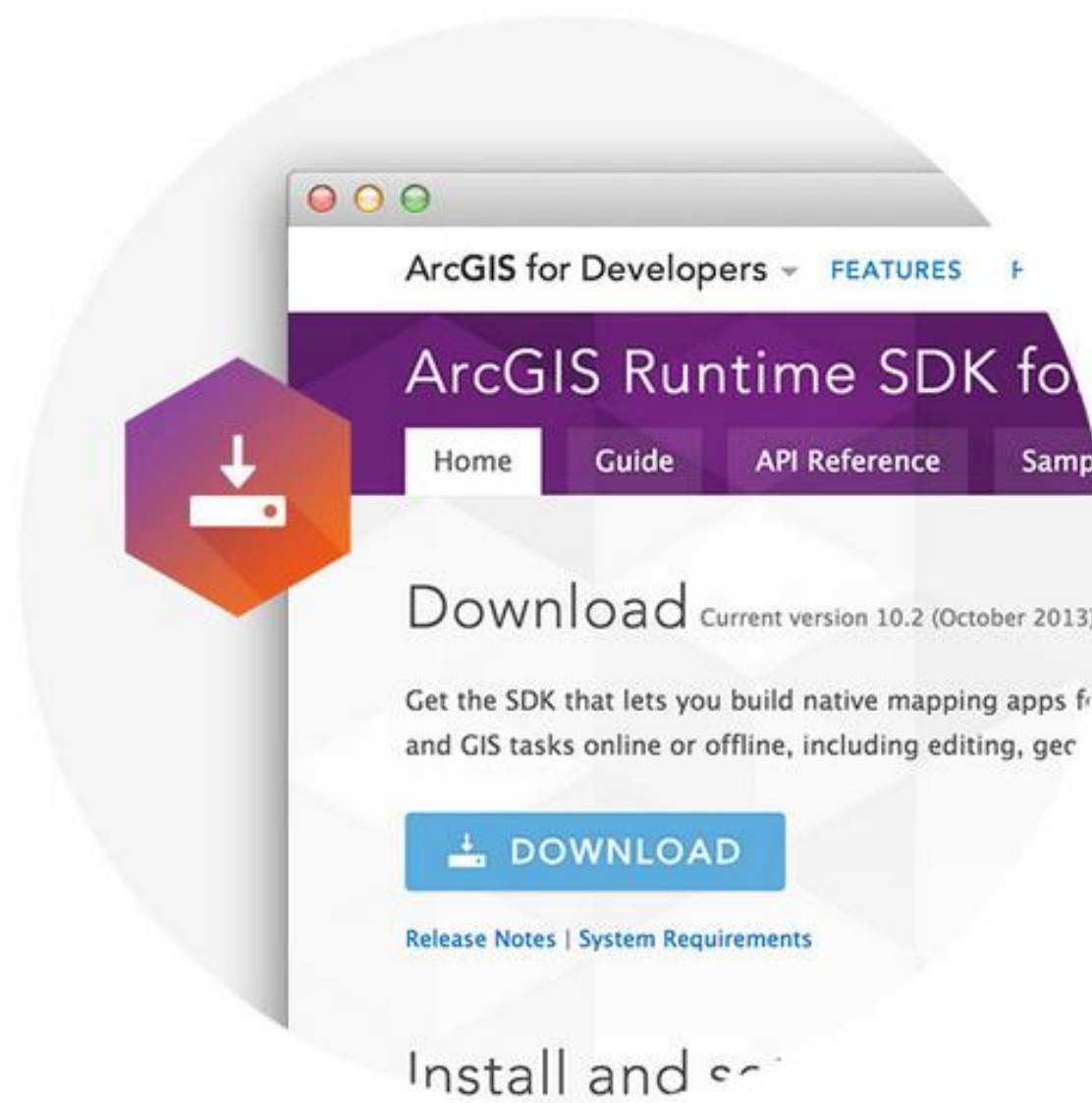


Demonstration

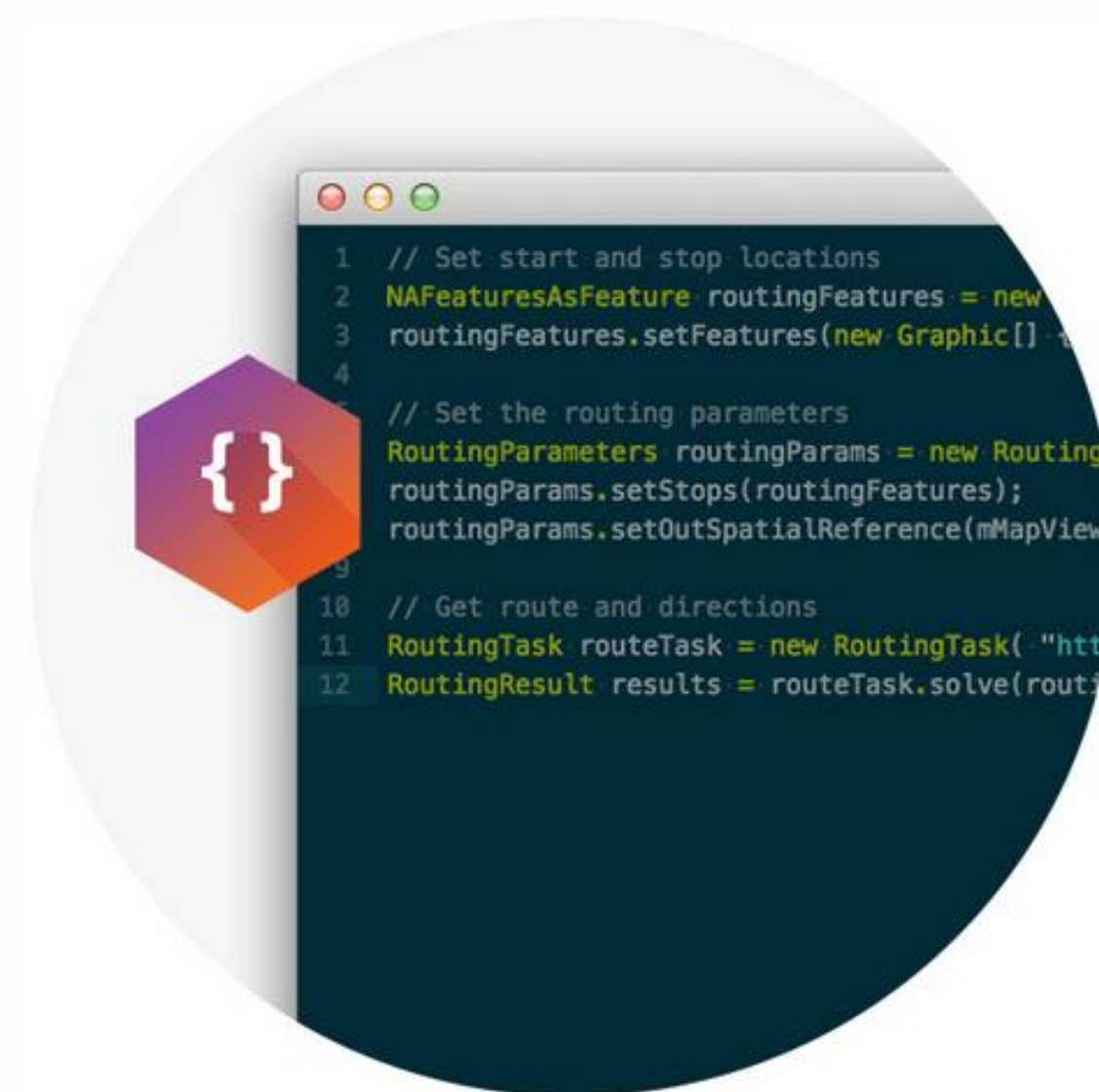
Location SDK in Action



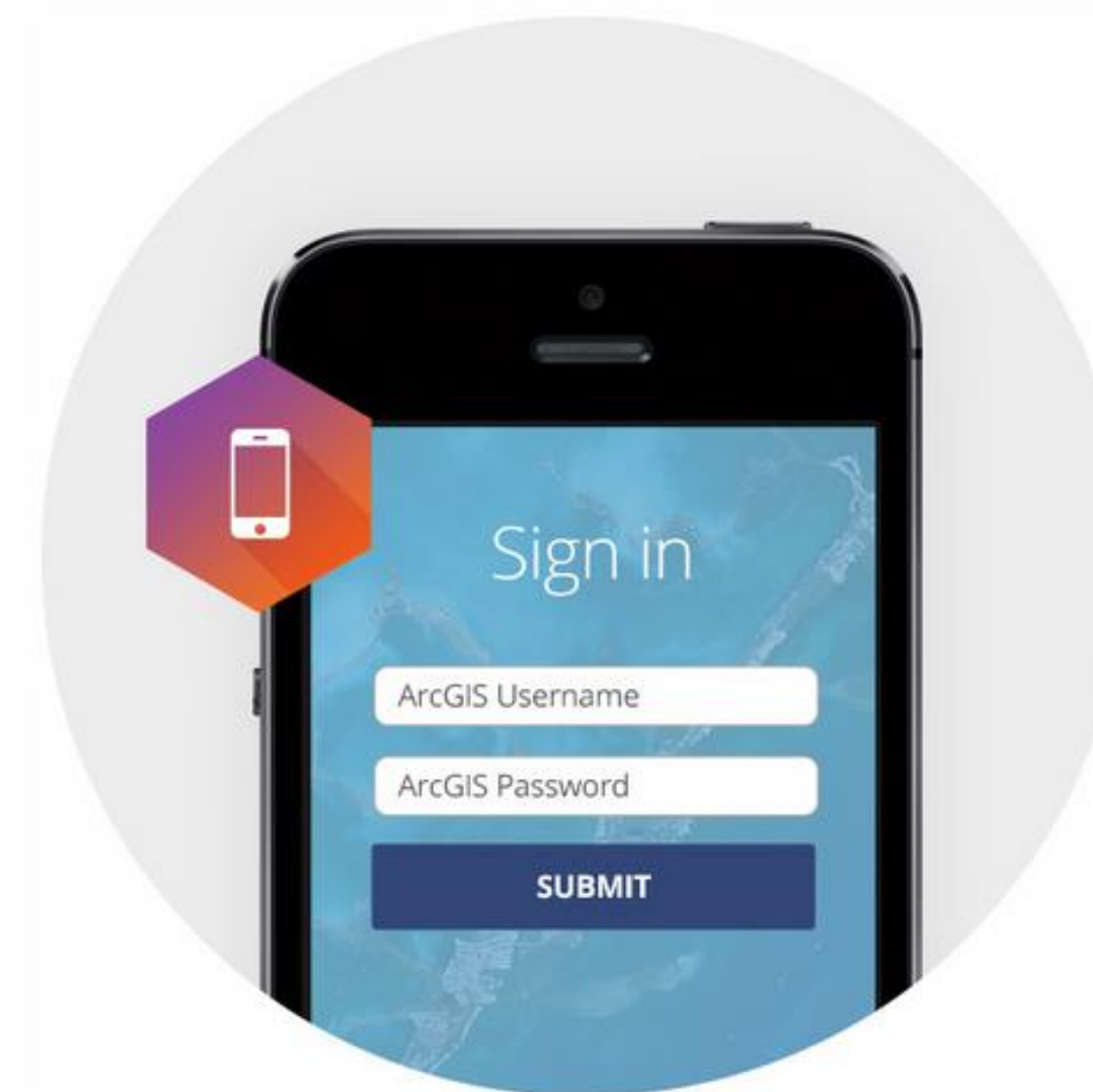
Development and Deployment Workflow



1. Download and Install



2. Develop and Test



3. Deploy and Distribute



Summary



Thank you!



Questions?

Come visit us at the Expo: #13

@ArcGISRuntime

<http://developers.arcgis.com/en/>

